



THE ACRES ESTATES



COMMUNITY
MASTER PLAN



THE ACRES
ESTATES



THE ACRES ESTATES
NEW RELEASE

PHASE MASTER PLAN



THE ACRES
ESTATES



IVORY COLLECTION

- 5 BEDROOM VILLA G+1 TYPE H-5BR
- 5 BEDROOM VILLA G+1 TYPE H-5BR(M)
- 6 BEDROOM VILLA G+1 TYPE J-6BR
- 6 BEDROOM VILLA G+1 TYPE J-6BR(M)
- 7 BEDROOM VILLA G+2 TYPE L-7BR

AMBER COLLECTION

- 5 BEDROOM VILLA G+1 TYPE G-5BR
- 5 BEDROOM VILLA G+1 TYPE G-5BR(M)
- 6 BEDROOM VILLA G+1 TYPE I-6BR
- 6 BEDROOM VILLA G+1 TYPE I-6BR(M)
- 7 BEDROOM VILLA G+2 TYPE K-7BR
- 7 BEDROOM VILLA G+2 TYPE K-7BR (M)



FLOOR PLANS

IVORY COLLECTION



THE ACRES ESTATES

5-BEDROOM VILLA TYPE H-5BR

TOTAL AREA:
642.25 SQM | 6,913.12 SQFT



GROUND LEVEL



FIRST LEVEL

DISCLAIMER: PLANS, DETAILS AND UNIT ORIENTATION INCLUDED ARE INDICATIVE ONLY AND ARE SUBJECT TO CHANGE BY THE DEVELOPER/SELLER AT ITS SOLE DISCRETION WITHOUT NOTICE AND/OR LIABILITY. ALL IMAGES, INCLUDING SWIMMING POOLS AND LANDSCAPE FEATURES, INTERIOR AND EXTERIOR FEATURES, FINISHES, FURNISHINGS, VIEW AND SCALE ARE ILLUSTRATIVE ONLY. FINAL AREAS, ORIENTATION, DIMENSIONS, LAYOUT AND MATERIALS MAY DIFFER FROM THOSE STATED. SWIMMING POOLS AND LANDSCAPE FEATURES ARE NOT INCLUDED AND ARE THE RESPONSIBILITY OF THE END USER.



THE ACRES ESTATES

5-BEDROOM VILLA TYPE H-5BR(M)

TOTAL AREA:
642.25 SQM | 6,913.12 SQFT



GROUND LEVEL



FIRST LEVEL

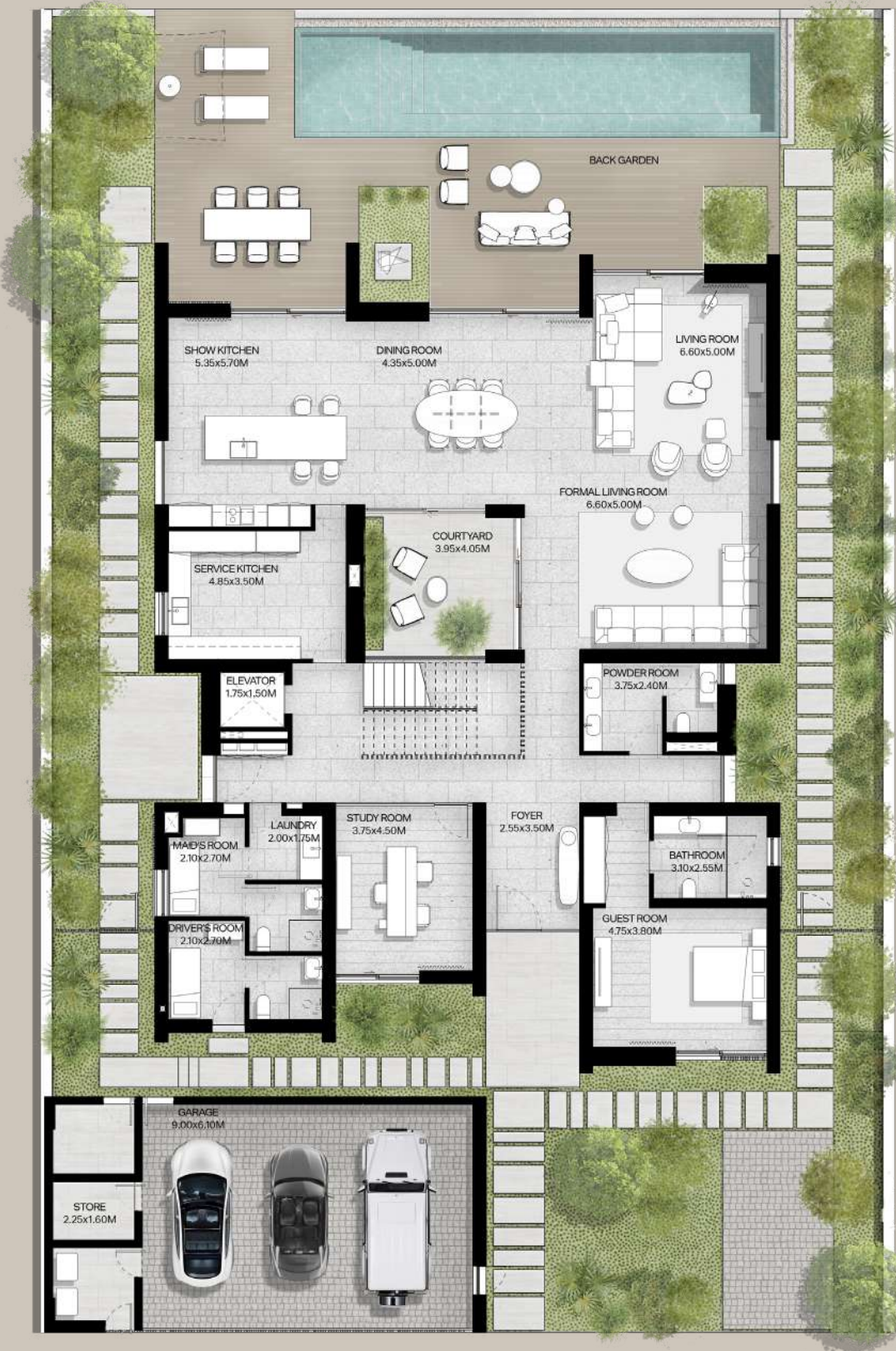
DISCLAIMER: PLANS, DETAILS AND UNIT ORIENTATION INCLUDED ARE INDICATIVE ONLY AND ARE SUBJECT TO CHANGE BY THE DEVELOPER/SELLER AT ITS SOLE DISCRETION WITHOUT NOTICE AND/OR LIABILITY. ALL IMAGES, INCLUDING SWIMMING POOLS AND LANDSCAPE FEATURES, INTERIOR AND EXTERIOR FEATURES, FINISHES, FURNISHINGS, VIEW AND SCALE ARE ILLUSTRATIVE ONLY. FINAL AREAS, ORIENTATION, DIMENSIONS, LAYOUT AND MATERIALS MAY DIFFER FROM THOSE STATED. SWIMMING POOLS AND LANDSCAPE FEATURES ARE NOT INCLUDED AND ARE THE RESPONSIBILITY OF THE END USER.



THE ACRES ESTATES

6-BEDROOM VILLA TYPE J-6BR

TOTAL AREA:
719.72 SQM | 7,747.00 SQFT



GROUND LEVEL



FIRST LEVEL

DISCLAIMER: PLANS, DETAILS AND UNIT ORIENTATION INCLUDED ARE INDICATIVE ONLY AND ARE SUBJECT TO CHANGE BY THE DEVELOPER/SELLER AT ITS SOLE DISCRETION WITHOUT NOTICE AND/OR LIABILITY. ALL IMAGES, INCLUDING SWIMMING POOLS AND LANDSCAPE FEATURES, INTERIOR AND EXTERIOR FEATURES, FINISHES, FURNISHINGS, VIEW AND SCALE ARE ILLUSTRATIVE ONLY. FINAL AREAS, ORIENTATION, DIMENSIONS, LAYOUT AND MATERIALS MAY DIFFER FROM THOSE STATED. SWIMMING POOLS AND LANDSCAPE FEATURES ARE NOT INCLUDED AND ARE THE RESPONSIBILITY OF THE END USER.



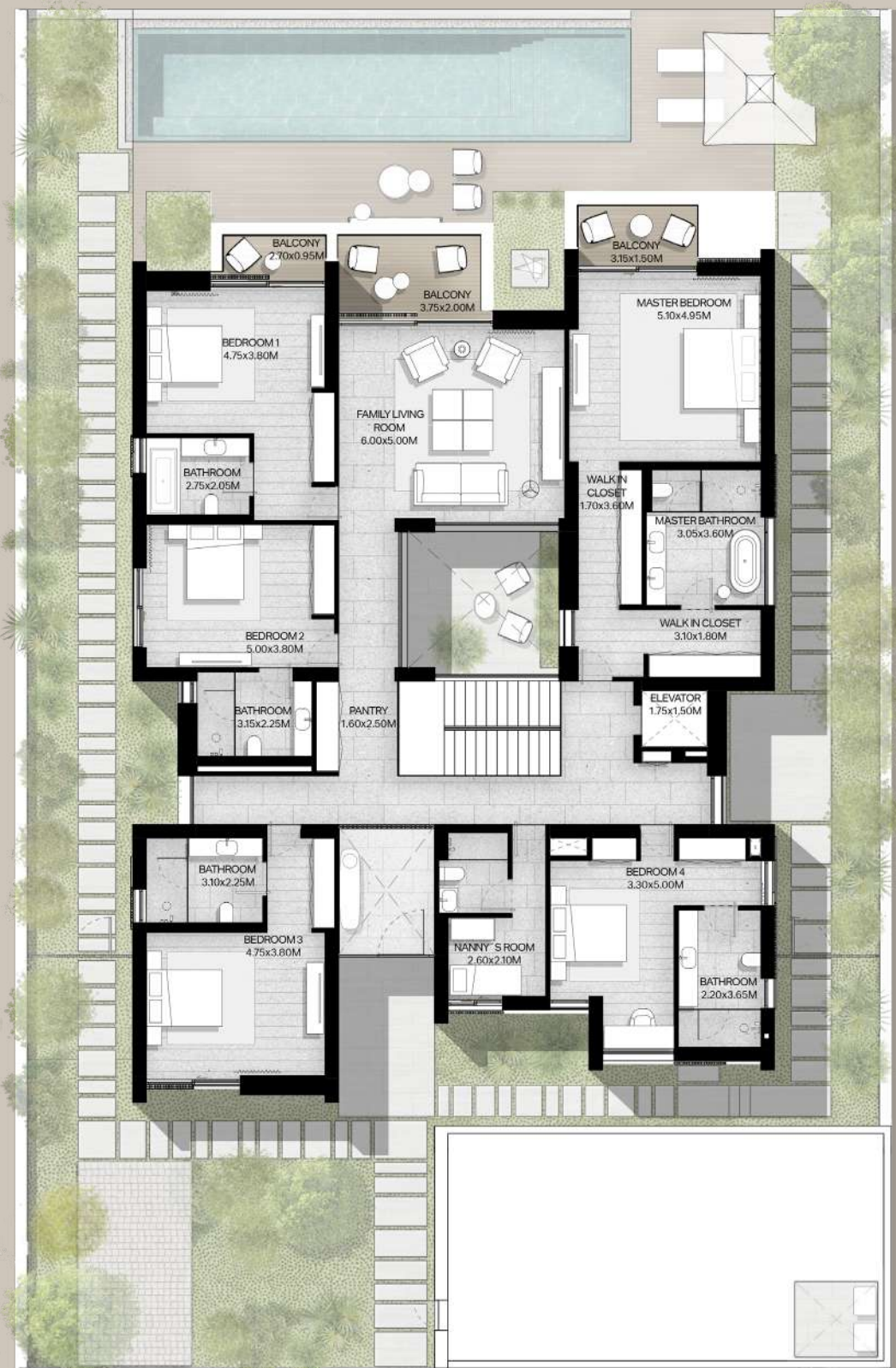
THE ACRES
ESTATES

6-BEDROOM
VILLA TYPE J-6BR(M)

TOTAL AREA:
719.72 SQM | 7,747.00 SQFT



GROUND LEVEL



FIRST LEVEL

DISCLAIMER: PLANS, DETAILS AND UNIT ORIENTATION INCLUDED ARE INDICATIVE ONLY AND ARE SUBJECT TO CHANGE BY THE DEVELOPER/SELLER AT ITS SOLE DISCRETION WITHOUT NOTICE AND/OR LIABILITY. ALL IMAGES, INCLUDING SWIMMING POOLS AND LANDSCAPE FEATURES, INTERIOR AND EXTERIOR FEATURES, FINISHES, FURNISHINGS, VIEW AND SCALE ARE ILLUSTRATIVE ONLY. FINAL AREAS, ORIENTATION, DIMENSIONS, LAYOUT AND MATERIALS MAY DIFFER FROM THOSE STATED. SWIMMING POOLS AND LANDSCAPE FEATURES ARE NOT INCLUDED AND ARE THE RESPONSIBILITY OF THE END USER.





THE ACRES
ESTATES

7-BEDROOM
VILLA TYPE L-7BR

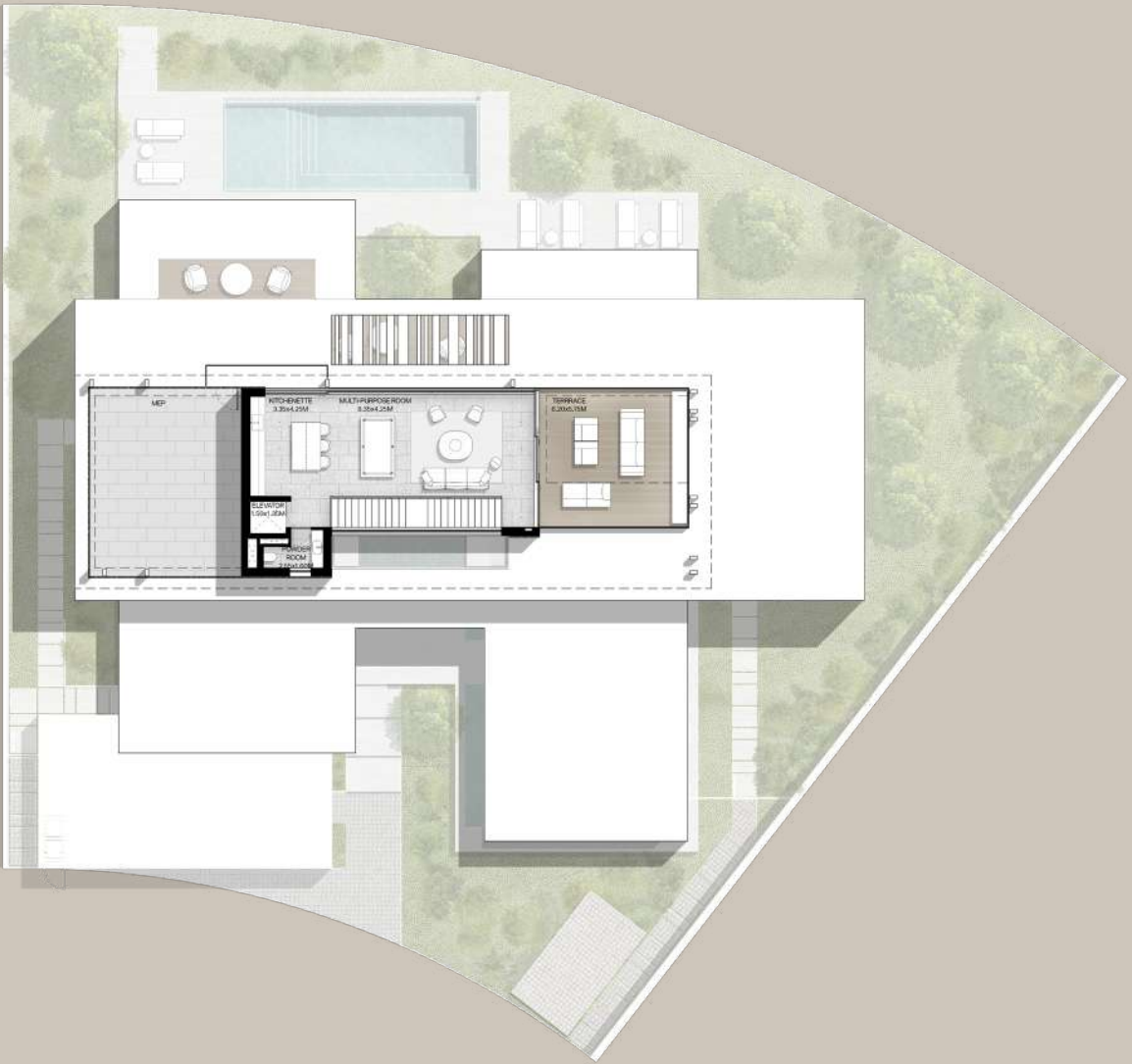
TOTAL AREA:
1,030.27 SQM | 11,089.73 SQFT



GROUND LEVEL



FIRST LEVEL



SECOND LEVEL

DISCLAIMER: PLANS, DETAILS AND UNIT ORIENTATION INCLUDED ARE INDICATIVE ONLY AND ARE SUBJECT TO CHANGE BY THE DEVELOPER/SELLER AT ITS SOLE DISCRETION WITHOUT NOTICE AND/OR LIABILITY. ALL IMAGES, INCLUDING SWIMMING POOLS AND LANDSCAPE FEATURES, INTERIOR AND EXTERIOR FEATURES, FINISHES, FURNISHINGS, VIEW AND SCALE ARE ILLUSTRATIVE ONLY. FINAL AREAS, ORIENTATION, DIMENSIONS, LAYOUT AND MATERIALS MAY DIFFER FROM THOSE STATED. SWIMMING POOLS AND LANDSCAPE FEATURES ARE NOT INCLUDED AND ARE THE RESPONSIBILITY OF THE END USER.

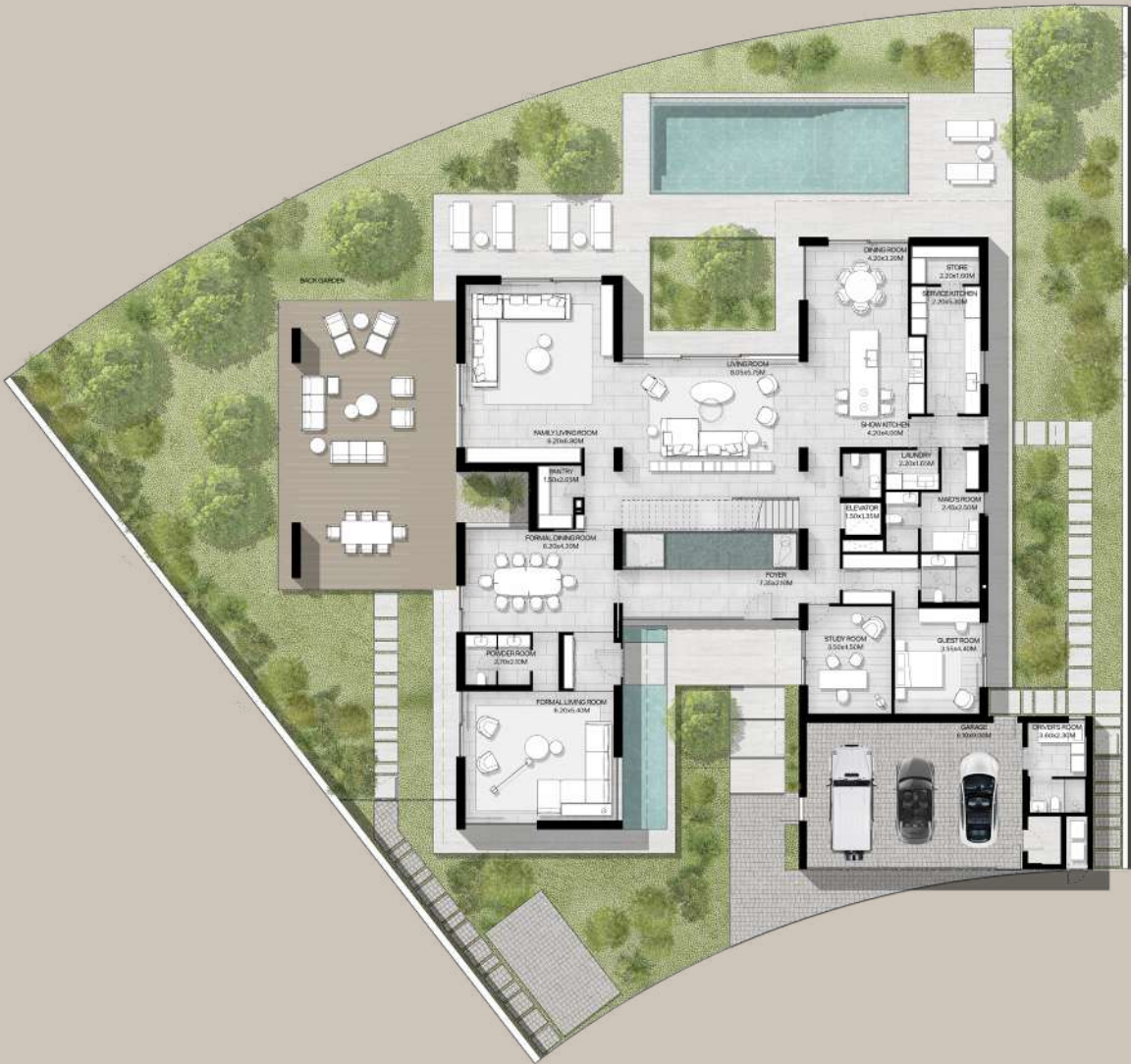




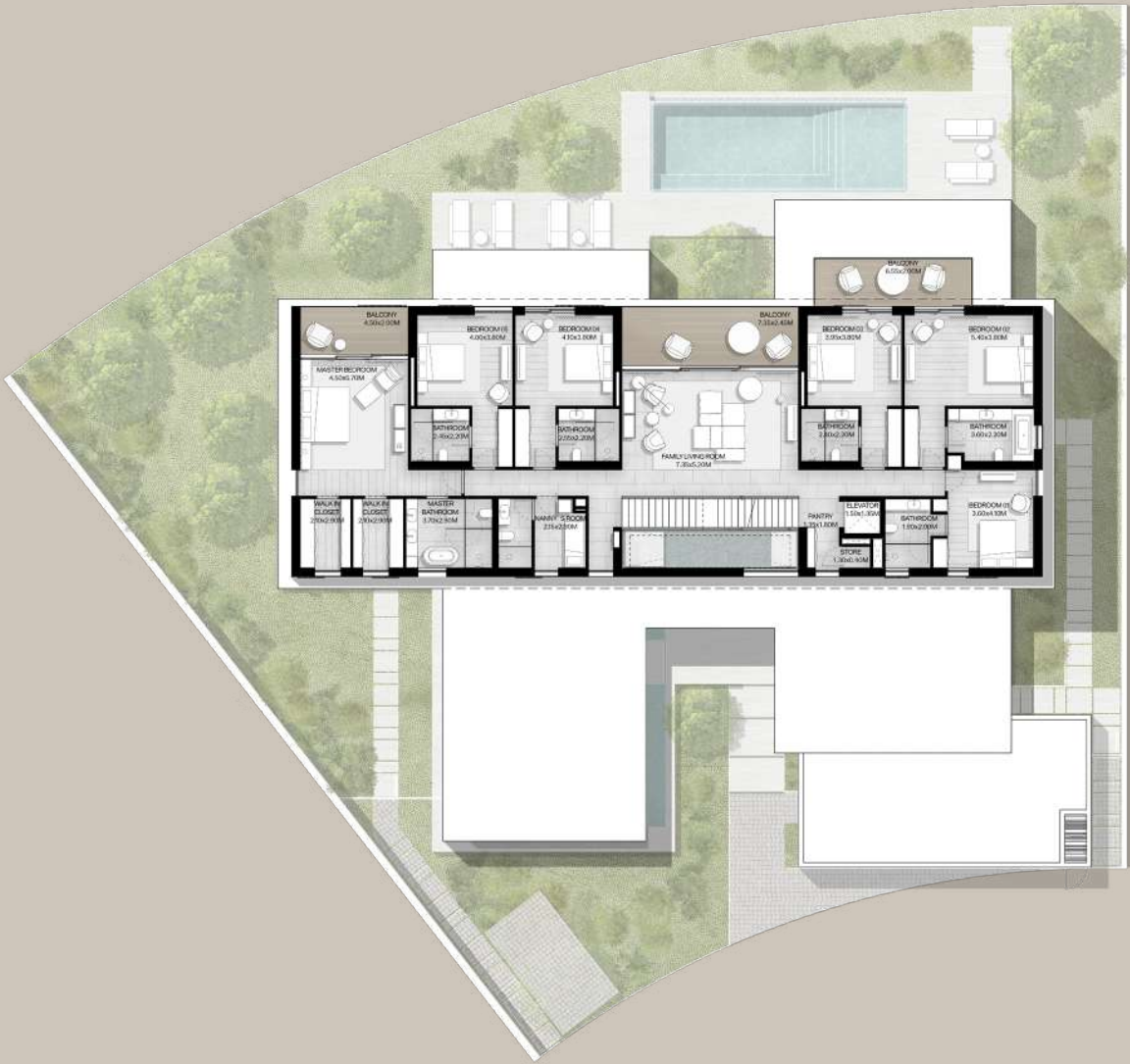
THE ACRES
ESTATES

7-BEDROOM
VILLA TYPE L-7BR(M)

TOTAL AREA:
1,030.27 SQM | 11,089.73 SQFT



GROUND LEVEL



FIRST LEVEL



SECOND LEVEL

DISCLAIMER: PLANS, DETAILS AND UNIT ORIENTATION INCLUDED ARE INDICATIVE ONLY AND ARE SUBJECT TO CHANGE BY THE DEVELOPER/SELLER AT ITS SOLE DISCRETION WITHOUT NOTICE AND/OR LIABILITY. ALL IMAGES, INCLUDING SWIMMING POOLS AND LANDSCAPE FEATURES, INTERIOR AND EXTERIOR FEATURES, FINISHES, FURNISHINGS, VIEW AND SCALE ARE ILLUSTRATIVE ONLY. FINAL AREAS, ORIENTATION, DIMENSIONS, LAYOUT AND MATERIALS MAY DIFFER FROM THOSE STATED. SWIMMING POOLS AND LANDSCAPE FEATURES ARE NOT INCLUDED AND ARE THE RESPONSIBILITY OF THE END USER.



FLOOR PLANS

AMBER COLLECTION



THE ACRES
ESTATES

5-BEDROOM
VILLA TYPE G-5BR

TOTAL AREA:
688.89 SQM | 7,415.15 SQFT



GROUND LEVEL



FIRST LEVEL

DISCLAIMER: PLANS, DETAILS AND UNIT ORIENTATION INCLUDED ARE INDICATIVE ONLY AND ARE SUBJECT TO CHANGE BY THE DEVELOPER/SELLER AT ITS SOLE DISCRETION WITHOUT NOTICE AND/OR LIABILITY. ALL IMAGES, INCLUDING SWIMMING POOLS AND LANDSCAPE FEATURES, INTERIOR AND EXTERIOR FEATURES, FINISHES, FURNISHINGS, VIEW AND SCALE ARE ILLUSTRATIVE ONLY. FINAL AREAS, ORIENTATION, DIMENSIONS, LAYOUT AND MATERIALS MAY DIFFER FROM THOSE STATED. SWIMMING POOLS AND LANDSCAPE FEATURES ARE NOT INCLUDED AND ARE THE RESPONSIBILITY OF THE END USER.





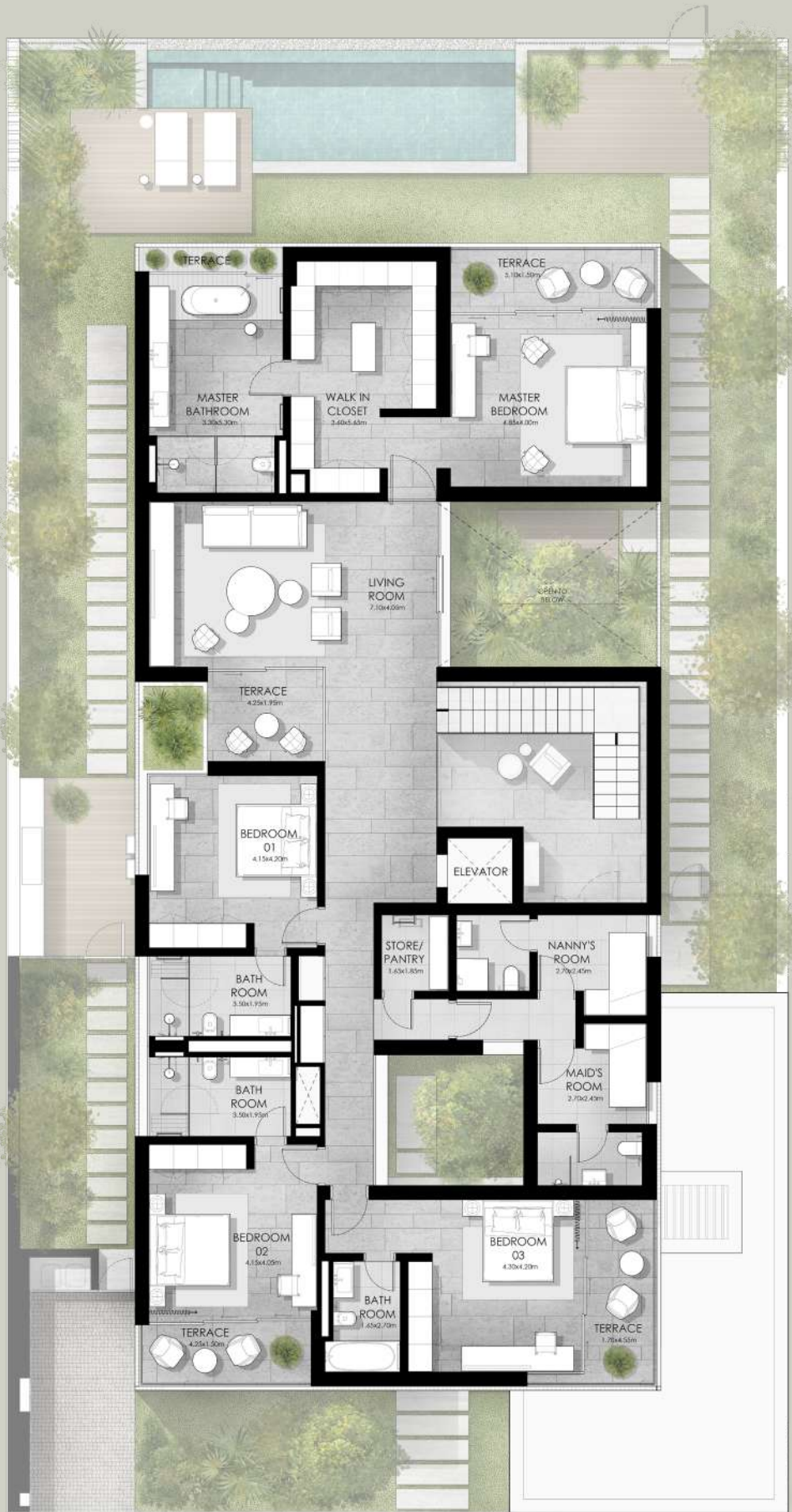
THE ACRES
ESTATES

5-BEDROOM
VILLA TYPE G-5BR(M)

TOTAL AREA:
688.89 SQM | 7,415.15 SQFT



GROUND LEVEL



FIRST LEVEL

DISCLAIMER: PLANS, DETAILS AND UNIT ORIENTATION INCLUDED ARE INDICATIVE ONLY AND ARE SUBJECT TO CHANGE BY THE DEVELOPER/SELLER AT ITS SOLE DISCRETION WITHOUT NOTICE AND/OR LIABILITY. ALL IMAGES, INCLUDING SWIMMING POOLS AND LANDSCAPE FEATURES, INTERIOR AND EXTERIOR FEATURES, FINISHES, FURNISHINGS, VIEW AND SCALE ARE ILLUSTRATIVE ONLY. FINAL AREAS, ORIENTATION, DIMENSIONS, LAYOUT AND MATERIALS MAY DIFFER FROM THOSE STATED. SWIMMING POOLS AND LANDSCAPE FEATURES ARE NOT INCLUDED AND ARE THE RESPONSIBILITY OF THE END USER.





THE ACRES ESTATES

6-BEDROOM VILLA TYPE 1-6BR

TOTAL AREA:
737.45 SQM | 7,937.85 SQFT



GROUND LEVEL



FIRST LEVEL

DISCLAIMER: PLANS, DETAILS AND UNIT ORIENTATION INCLUDED ARE INDICATIVE ONLY AND ARE SUBJECT TO CHANGE BY THE DEVELOPER/SELLER AT ITS SOLE DISCRETION WITHOUT NOTICE AND/OR LIABILITY. ALL IMAGES, INCLUDING SWIMMING POOLS AND LANDSCAPE FEATURES, INTERIOR AND EXTERIOR FEATURES, FINISHES, FURNISHINGS, VIEW AND SCALE ARE ILLUSTRATIVE ONLY. FINAL AREAS, ORIENTATION, DIMENSIONS, LAYOUT AND MATERIALS MAY DIFFER FROM THOSE STATED. SWIMMING POOLS AND LANDSCAPE FEATURES ARE NOT INCLUDED AND ARE THE RESPONSIBILITY OF THE END USER.



THE ACRES ESTATES

6-BEDROOM VILLA TYPE I-6BR(M)

TOTAL AREA:
737.45 SQM | 7,937.85 SQFT



GROUND LEVEL



FIRST LEVEL

DISCLAIMER: PLANS, DETAILS AND UNIT ORIENTATION INCLUDED ARE INDICATIVE ONLY AND ARE SUBJECT TO CHANGE BY THE DEVELOPER/SELLER AT ITS SOLE DISCRETION WITHOUT NOTICE AND/OR LIABILITY. ALL IMAGES, INCLUDING SWIMMING POOLS AND LANDSCAPE FEATURES, INTERIOR AND EXTERIOR FEATURES, FINISHES, FURNISHINGS, VIEW AND SCALE ARE ILLUSTRATIVE ONLY. FINAL AREAS, ORIENTATION, DIMENSIONS, LAYOUT AND MATERIALS MAY DIFFER FROM THOSE STATED. SWIMMING POOLS AND LANDSCAPE FEATURES ARE NOT INCLUDED AND ARE THE RESPONSIBILITY OF THE END USER.



THE ACRES
ESTATES

7-BEDROOM
VILLA TYPE K-7BR

TOTAL AREA:
999.36 SQM | 10,757.02 SQFT



GROUND LEVEL



FIRST LEVEL



SECOND LEVEL

DISCLAIMER: PLANS, DETAILS AND UNIT ORIENTATION INCLUDED ARE INDICATIVE ONLY AND ARE SUBJECT TO CHANGE BY THE DEVELOPER/SELLER AT ITS SOLE DISCRETION WITHOUT NOTICE AND/OR LIABILITY. ALL IMAGES, INCLUDING SWIMMING POOLS AND LANDSCAPE FEATURES, INTERIOR AND EXTERIOR FEATURES, FINISHES, FURNISHINGS, VIEW AND SCALE ARE ILLUSTRATIVE ONLY. FINAL AREAS, ORIENTATION, DIMENSIONS, LAYOUT AND MATERIALS MAY DIFFER FROM THOSE STATED. SWIMMING POOLS AND LANDSCAPE FEATURES ARE NOT INCLUDED AND ARE THE RESPONSIBILITY OF THE END USER.





TOTAL AREA:
999.36 SQM | 10,757.02 SQFT





MERAAS