



# EDEN HOUSE

THE PARK

A DEVELOPMENT BY H&H



WHERE YOU  
COME HOME

Eden House is an exclusive, community-inspired residential concept designed to inspire connection, leisure, and a balanced, refined lifestyle. With impeccably crafted contemporary homes, curated hospitality services, and prime city access, Eden House is more than a home – it's a place to belong.



# Where you belong

Developed by H&H and owned by Global Partners, Eden House The Park reflects a shared vision of sophisticated living, where quality and attention to detail are paramount. This unique community effortlessly merges meticulous design with elevated, active lifestyle, setting a new standard for waterfront living in Dubai.



## A contemporary residential community along the Dubai Water Canal

A lifestyle destination unto itself, Eden House The Park is a leafy, walkable community with seven low-rise buildings, where sincere hospitality meets the comfort of home. Every detail is thoughtfully crafted for a life of balance and connection, with high-end wellness facilities and beautifully landscaped green spaces.

Eden House The Park is conveniently close to the vibrant Eden House The Canal, fostering a sense of connection with like-minded individuals.

# Finding abundance in nature

Here, your surroundings breathe with you. Expansive, beautifully landscaped gardens blend acres of lush grasses, fragrant blooms, and native trees, creating a natural, peaceful sanctuary on the doorstep of the city. Whether embracing the morning light beneath the canopy of trees or finding your flow in a yoga session surrounded by nature, life at Eden House The Park follows a softer, more natural rhythm—where every moment offers a gentle connection to the world around you.

An aerial photograph of a modern residential development in Dubai, United Arab Emirates. The foreground shows several multi-story apartment buildings with balconies and greenery, situated along a waterfront. In the background, the dense Dubai skyline is visible, featuring numerous skyscrapers, including the Burj Khalifa. The word "LOCATION" is overlaid in large white letters across the center of the image.

# LOCATION



# An urban escape on Jumeirah's coveted canal waterfront

One of Dubai's most coveted addresses, the Dubai Water Canal winds through the historic Jumeirah area with quaint, pedestrian-friendly streets and kilometres of waterfront boardwalk. Effortlessly connected yet discreetly located, this cosmopolitan oasis is minutes from Sheikh Zayed Road, 10 minutes from Downtown Dubai and 15 minutes from the Dubai International Financial Centre (DIFC).



# A sophisticated address, one beat away from the action

Perfectly positioned near the city's most culturally enriching attractions including City Walk, Burj Khalifa, and the Museum of the Future, Eden House The Park places you at the crossroads of inspiration, offering a deeper connection to the city. An ideal address for those who travel frequently, it is just 15 minutes from Dubai International Airport (DXB), and 30 minutes from Al Maktoum Airport (DWC) – the 'airport of the future'.

## TRAVEL TIMES

- 5 minutes to Galleria Mall Al Wasl
- 8 minutes to City Walk
- 8 minutes to Jumeirah Beach
- 10 minutes to Burj Khalifa
- 10 minutes to Dubai Mall
- 10 minutes to Dubai Opera
- 12 minutes to Museum of the Future
- 13 minutes to Downtown
- 13 minutes to Jumeirah Emirates Towers
- 13 minutes to J1 Beach
- 16 minutes to DIFC
- 18 minutes to Dubai International Airport
- 22 minutes to Palm Jumeirah





THE LIFESTYLE

# Life graced with leisure and wellness

Life beside the canal offers more than serene, scenic views – it's an invitation to embark on a life of joyful leisure, permeated by a natural sense of wellness. The 6.2km canal boardwalk provides an idyllic backdrop for a daily run, walk, or bike ride, enhanced by beautiful vistas of both the water and the city skyline. Jumeirah Beach and Kite Beach are just moments away, with sun-soaked shores and boutique beachfront cafés inspiring moments of peace and relaxation.



# A timeless retreat for every generation

A haven for refined family living, Eden House The Park is a place for all generations. Younger residents can mingle and play in the children's park and pool while families and individuals can connect and indulge in world-class amenities including excellent fitness centers, community pools, and thoughtfully curated shared spaces.





EXCELLENCE  
IN DESIGN

# Architectural excellence meets canalfront elegance

A masterful display of contemporary architecture, these seven low-rise buildings echo the fluid lines of the canal with undulating curves and expansive glass façades inviting an abundance of natural light. Each building is perfectly set within acres of ornamental desert grasses, native trees, and flowering shrubs, creating a natural and breathable escape from the nearby city.

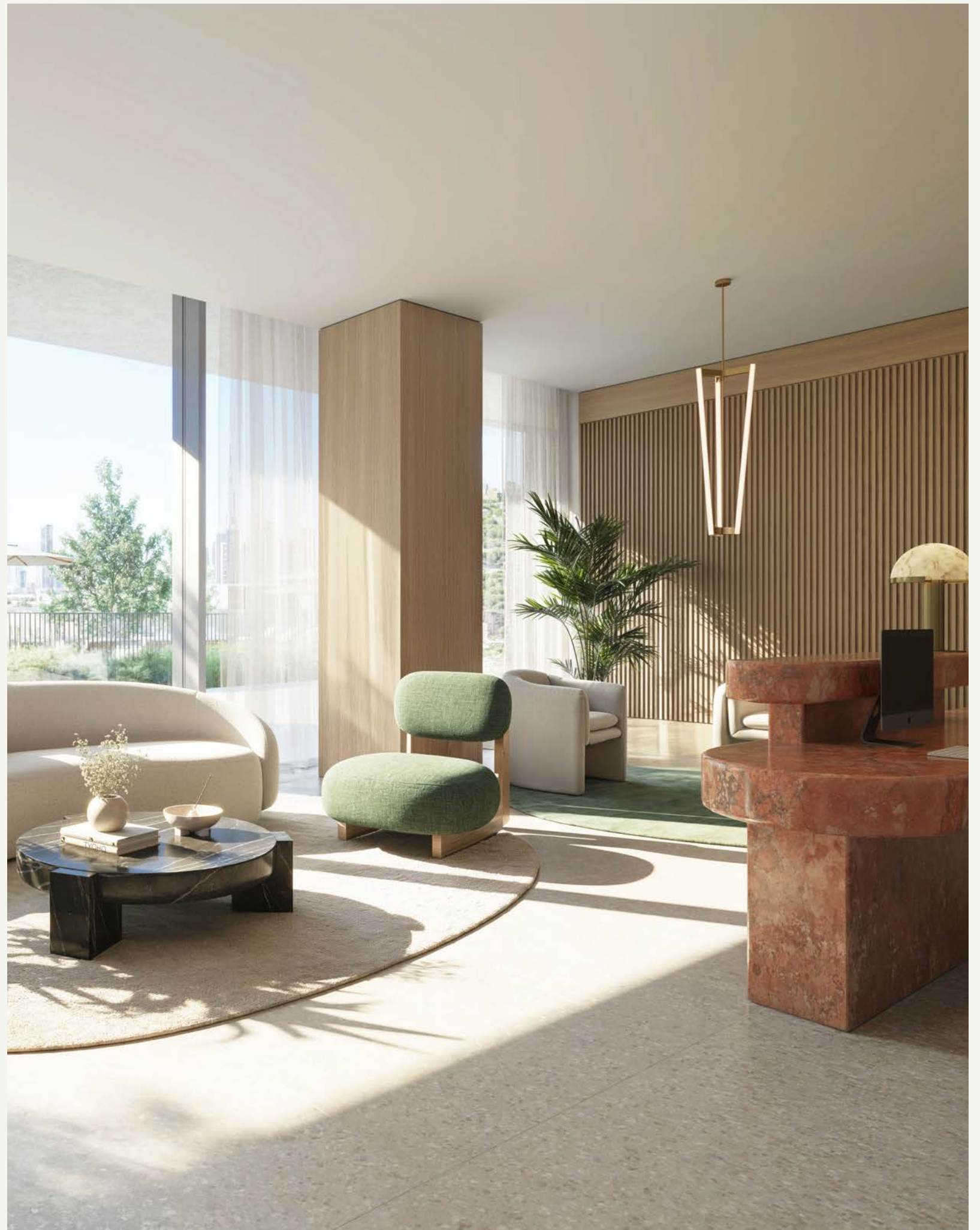
At Eden House The Park, design excellence is more than an aesthetic – it's a sincere call to live better.



COLLECTIVE  
EXPERIENCES

# The welcome home you deserve

Few welcomes are as warm as your return to Eden House The Park. In each building, elegant lobbies with comfortable seating areas provide a place to pause and connect, setting the tone for the refined space and lifestyle that lies beyond the entryway.



# Where residents connect effortlessly

Designed to foster both social interaction and quiet retreat, residents can enjoy access to expansive shared spaces, including stately residents-only lounges. Elegant finishes maintain the refined aesthetic throughout, ensuring that every moment spent outside your residence is as elevated as the one within.



# Boutique shopping and topnotch dining

A self-sustaining community designed for elevated, upscale living, residents can browse through a handpicked selection of boutique retailers set along the canalfront.

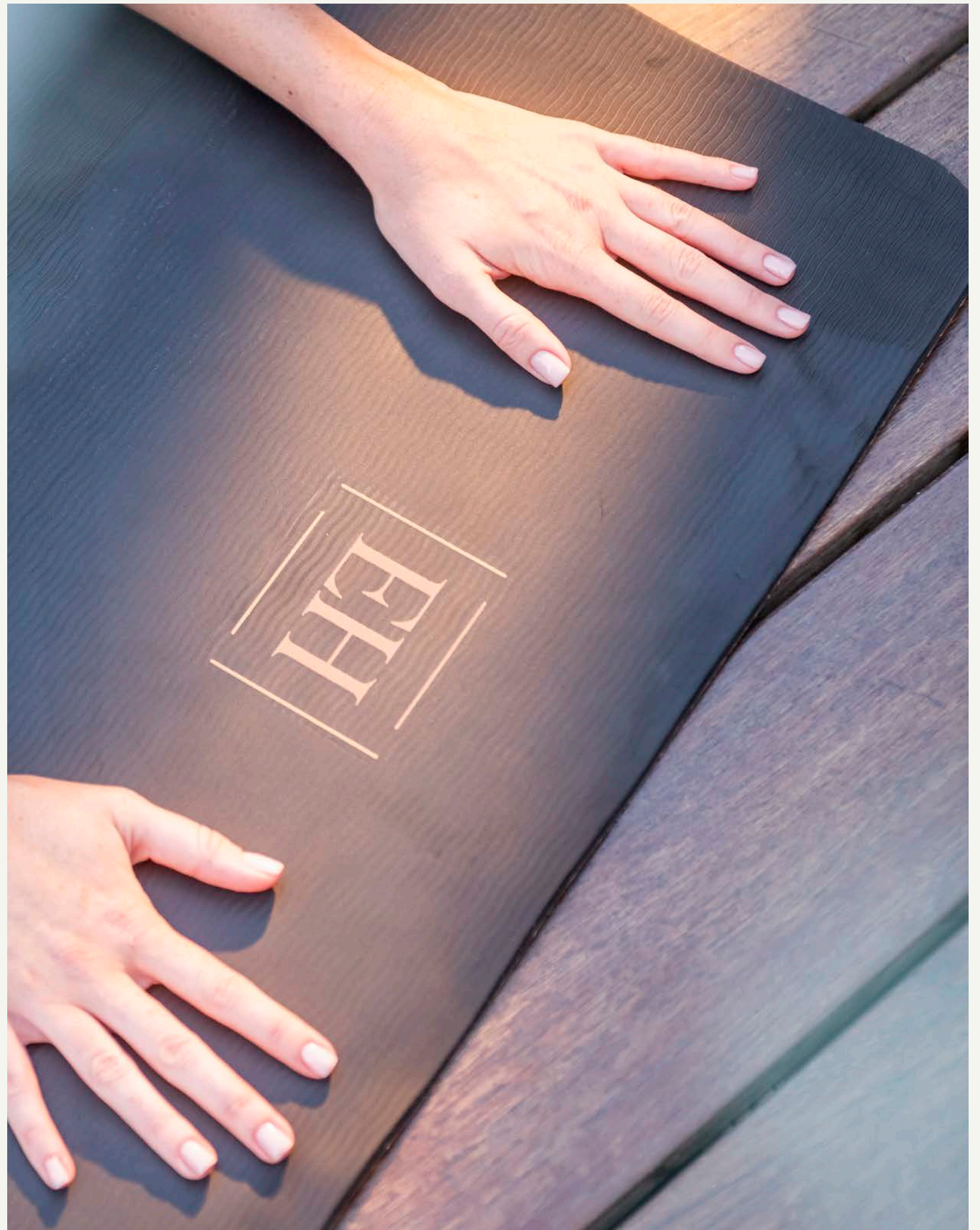


A modern outdoor pool area at dusk. The pool is illuminated with a warm, golden light. Several lounge chairs with white cushions are arranged around the pool. In the foreground, a circular wicker sofa with white cushions is visible. The background features a large, multi-story building with a curved facade and balconies, partially obscured by trees. The overall atmosphere is serene and luxurious.

# AMENITIES

# Carefully curated amenities

Eden House is an experience, not just a home. Wellness and leisure are woven into every day, with three glistening community pools and a selection of state-of-the-art fitness centers. Residents can retreat to the exclusive Eden House Wellness suite for bespoke treatments, or unwind in the sauna and steam rooms to melt away the stresses of the day.





# Where Wellness takes center stage

Eden House holds that genuine wellbeing flourishes within a vibrant community. This belief infuses every element of life in its residences, where each detail nurtures a sense of belonging and holistic health.

In the lively fitness center, shared energy invigorates workouts, while the peaceful spa offers a retreat for restorative treatments. Eden House Wellness balances dynamic movement with moments of stillness, fostering both connection and introspection. Residents also benefit from exclusive fitness classes, including yoga, Pilates, boxing, and high-intensity interval training, along with thoughtfully curated wellness experiences.





# BESPOKE SERVICES

# Your every need, anticipated

Convenience at Eden House The Park is elevated to an art form. Led by a team of seasoned hospitality professionals, our dedicated concierge and host services are designed to ensure that every aspect of your day-to-day life flows effortlessly – whether it's arranging a dining reservation at one of Dubai's finest restaurants, organizing an important event, or assisting with business center services.

A la carte services at Eden House are designed to anticipate your every need with sincere, personalized attention. Whether it's having your kitchen perfectly stocked for your return, tending to your beloved pets, or even arranging swimming lessons for your children, each request is fulfilled with effortless precision, empowering you to enjoy life's finer moments without interruption.

# Signature services

- Day-to-day residence management
- Private residential concierge
- Bellman
- 24-hour security with comprehensive CCTV coverage
- 24-hour on-property general maintenance support
- Resident and guest valet parking
- Mail and package delivery/collection
- High-speed WiFi

# À la carte services

- Housekeeping
- Dry cleaning and laundry
- Plant care and florist services
- Technical and repair services
- Vacant home care program
- Personal in-residence butler
- Childcare services
- Private chef
- Chauffeur services
- Spa treatments with Eden House Wellness
- Personal training
- Personal shopping
- Daily newspaper delivery
- Carwash services
- Pet care

*These additional services are chargeable*



THE RESIDENCES

# Impeccably crafted homes

These carefully crafted residences range from sleek studios to spacious three-bedroom homes, all exquisitely designed with high-end marble finishes, natural wooden textures, spacious private balconies. Floor-to-ceiling windows flood the spaces with natural light, framing captivating views of the Dubai Water Canal and city skyline.





# Four bedroom residences

The four-bedroom apartments feature expansive open-plan living areas, floor-to-ceiling windows, and bespoke interiors designed to inspire. Versatile in design, the bedrooms can be easily adapted for family living, a home office, or additional living space tailored to your lifestyle.







# Garden residences

Offering a seamless blend of indoor and outdoor living, canal-facing ground floor garden units invite residents to step into lush, private outdoor spaces with exceptional views. An abundance of light and a neutral color palette create luminous, bright interiors, enhanced by natural textures of wood and stone.









# Penthouses

A masterclass in sophistication, the penthouses are palatial residences with panoramic views of the city and canal. A home that is inspiring and functional, it has beautiful marble finishes, four large bedrooms, and a wrap-around private terrace that elegantly extends the living space outdoors.









# TEAM

## ABOUT H&H

H&H Development, founded in 2007, has since evolved into a prominent developer, asset manager, and investor in Dubai's real estate market with a rapidly expanding portfolio. The company specializes in offering customized, comprehensive turnkey developments, with a vision to transform modern living through projects that adhere to the highest standards of quality, backed by cutting-edge design.

The development of the Four Seasons Hotel, Dubai DIFC, and the Four Seasons Resort Dubai at Jumeirah Beach, two premium landmarks in the city's hospitality sector, exemplifies H&H's approach to crafting opulent experiences. The company's further projects, including Alia Developments DIFC and Eden House, also exhibit H&H's commitment to excellence in development.

*[www.h-h.ae](http://www.h-h.ae)*

## ABOUT GLOBAL PARTNERS

Global Partners is an institutional fund manager specializing in alternative investments. Based in the Dubai International Financial Centre and regulated by the Dubai Financial Services Authority, the company was founded by a team of seasoned global investment professionals and prominent family offices in the UAE. They share a common vision: to present exceptional alternative investment opportunities in the UAE to a broader global audience.

In just 18 months, the firm has made significant strides, successfully closing its inaugural fund and raising USD 212 million from notable investors in Dubai, Europe, and North America. They have identified and acquired prime properties for development under this fund and secured a robust pipeline of land for future funds.

For more information, visit:  
*[www.globalpartners-ltd.com](http://www.globalpartners-ltd.com)*

## ABOUT DXB LAB

DXB Lab is an award-winning architecture practice based in Dubai, UAE. Established in 2000 by Khalid Al Najjar, the firm has gained a distinguished reputation in the Middle East by combining disciplined design principles, architectural avant-garde, and modern technologies.

DXB Lab excels in Private Residences, Commercial Buildings, Cultural Projects, and more. The team is led by Khalid Al Najjar and consists of locally and internationally trained individuals who bring a blend of distinctive backgrounds and design talents, fostering a lively and experimental atmosphere. Each project is approached with rigour and excitement, pushing beyond boundaries to create progressive architecture.

The firm's work has been widely published, and its expertise extends to building engineering, component manufacturing, and landscape design.

*[www.dxb-lab.com](http://www.dxb-lab.com)*

## DISCLAIMER: ARTIST RENDERINGS

The artist representations and interior decorations, finishes, appliances, and furnishings are provided for illustrative purposes only. H&H Development LLC makes no representations or warranties except as set forth in the Offering Plan. H&H Development LLC reserves the right to substitute materials, appliances, equipment, fixtures and other construction and design details specified herein with similar materials, appliances, equipment and/ or fixtures of substantially equal or better quality. H&H Development LLC reserves the right to make changes in accordance with the terms of the Offering Plan. The use of any designations, labels or nomenclature is for marketing purposes only.

## CONTACT

Sales Gallery

Mandarin Oriental Jumeira, Dubai, UAE

Tel +971 4 439 4691

A development by H&H



EH